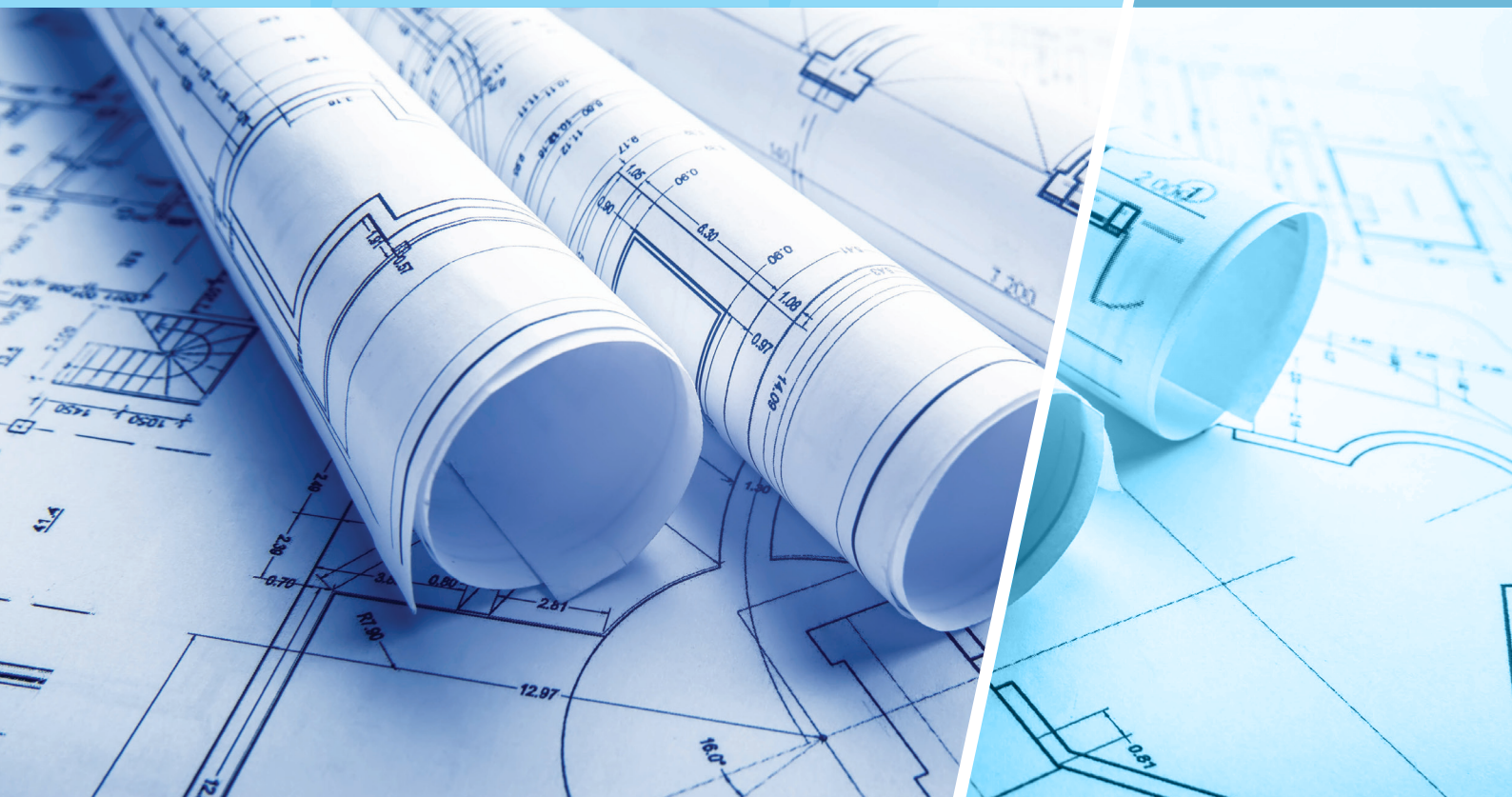


d. zignscape

Think global, act local



Think global, act local



/ Company Overview

d.zignscape Consultants Ltd. is a full service Structural, Architectural, Electrical, Plumbing, fire protection and sustainable engineering design firm. Founded in 2002 by its current principal Mr. Sayeedur Rahman Ronnie B.sc Engineer (Civil) MIEB: 19024, DMINB-CE/0009 the firm offers design, construction management and building commissioning services for the building industry and consulting services for a wide range of clients. Throughout these years we have completed a multitude of building system designs as well as municipal infrastructure projects.

d.zignscape is dynamic professional engineering firm combining decades of experience with innovative design meeting today's needs for efficient buildings that minimizing their environmental footprint and maximizes available resources. The firm specializes in the all type of design and construction management of commercial, industrial, educational, hospital and governmental projects in the public as well as the private sector. Our services cover complete Building Commissioning Services, Peer Review, Plan Review and Inspection services with our in house staff of licensed and certified engineers, inspectors and professionals. Our Building Evaluation Team provides complete services to ensure the continued safe occupancy of buildings, structural, MEP and vertical transportation. The d.zignscape client oriented philosophy and wide range of expertise has enabled us to establish a very well founded reputation of proficiency and excellence. We have been able to achieve these high standards of excellence by maintaining a staff of highly qualified and experienced professionals.





/ Message from the Chairman

It is a great pride to inform you that the d.zignscape is one of the pioneer engineering and bright consulting firms in Bangladesh having achieved remarkable growth over the last fifteen years and contributing significant development in the field of Bangladesh structural construction. The company has achieved prominence as leader in the field of consultancy and engineering through hard work and competence, competencies timely delivery with high quality standard and recognized safety performance. The company has a long experience with our experienced engineer to serve our valued customer up to their complete satisfaction through our efficient management and

excellent modern equipments in our laboratories. The service will continue to maintain with our untiring efforts.

The company is striving hard for innovation and enhances efficiency in the area of new technologies.

Offering services spanning a wide range of engineering fields in industrial, commercial, structures, building constructions management. Detail Engineering assessment, and design report. d.zignscape is the preferred choice of many clients because of its reliability and commitment to quality and safety.

As we look to the years ahead we renew our pledge to remain committed to excellence, keep abreast of changes and innovations, adopt better management and consulting techniques and successfully overcome all challenges before us.

Dr. Majibur Rahman
Chairman
d.zignscape

/ Message from the Managing Director

d.zignscape Founded in 2002, our Engineers practice reflects more than seven decades of commitment to technical expertise, exceptional client service through close collaboration and life-long learning. Our innovative structural designs have saved clients hundreds of millions of BDT/Dollars and are delivered by taking full advantage of our expertise and experience. D.zignscape is distinguished by the ability to communicate complex technical issues in a way that our clients understand. Technical innovation derived through participation in the development of seismic codes and evaluation guidelines is a hallmark of our staff development. Our engineers have led or participated in the

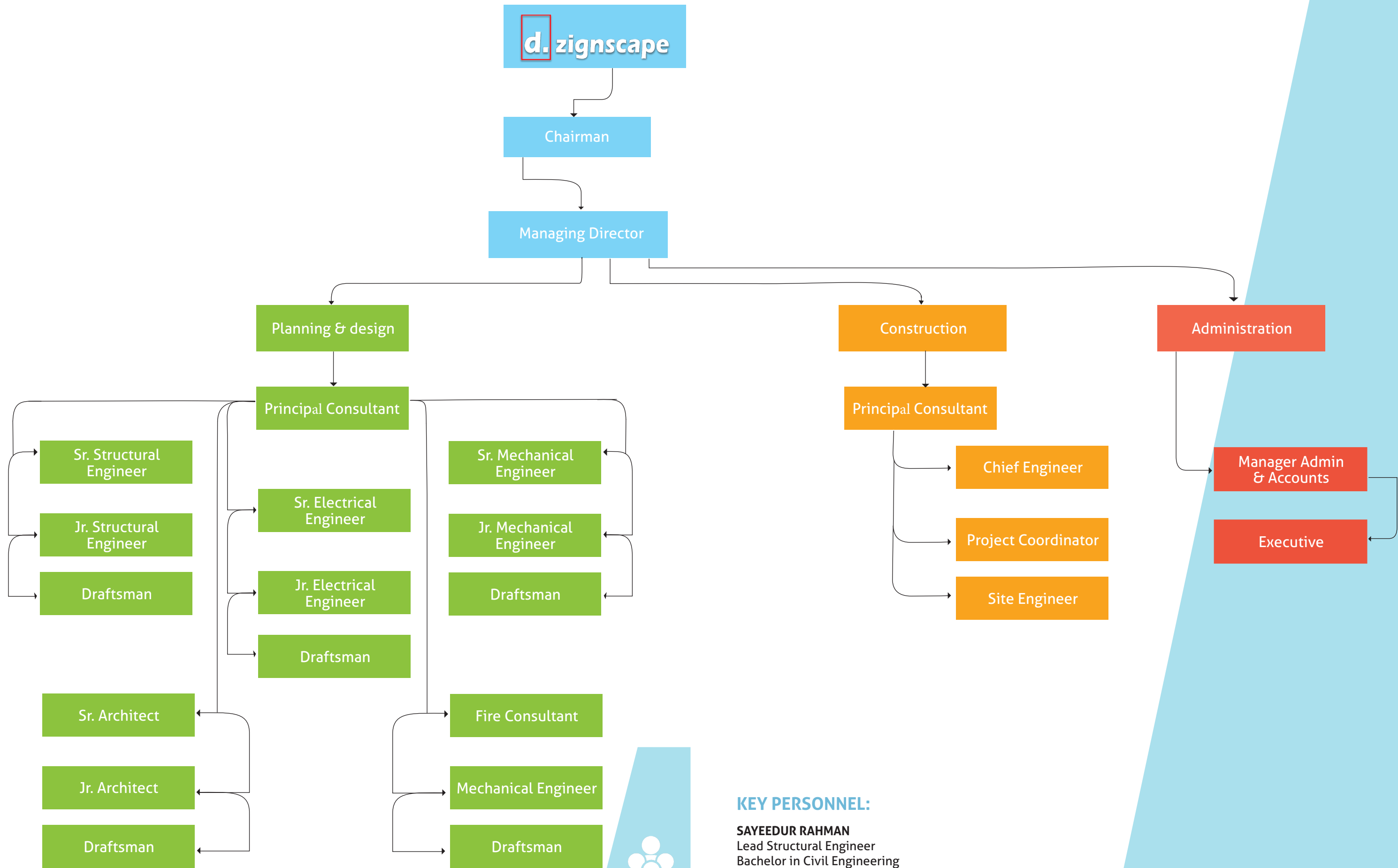
development of every Bangladesh based seismic code used today. Because we know them so well we look beyond existing standards to what our clients need to know next.

We understand our clients have competing demands for their projects. Active listening and team integration result in the best solutions for each of our clients not just the best structural/seismic system. Our client-centric approach includes developing multiple options, advising teams on possibilities, and revisions based on the needs of the overall project. We listen, reflect, consult, and advise.

Our customized structural solutions meet every project need whether those needs are meeting stringent codes, meeting a bottom line sticking to a hard construction schedule, or developing a structural system that creates a landmark.

Sayeedur Rahman
Managing Director
d.zignscape

/ Company Organogram



KEY PERSONNEL:

SAYEEDUR RAHMAN
Lead Structural Engineer
Bachelor in Civil Engineering
MIEB (M-19024)
(DINBCE-009)


/ Our Strength

Manpower 85

 **10** Graduate Civil Engineers
(5-15 years Experience) ”

“ **4** Graduate Architects
(5-15 years Experience)



 **2** Electrical Engineer
(5-15 years Experience) ”

“ **1** Mechanical Engineer
(5-15 years Experience)



 **1** Fire Consultant
(5-15 years Experience) ”

“ **3** Electrical Engineers
(2-5 years Experience)



 **5** Mechanical Engineers
(2-5 years Experience) ”

“ **40** Graduate Civil Engineers
(2-5 years Experience)



 **5** Diploma Architects
(2-10 years Experience) ”

“ **14** Diploma Civil Engineers
(2-5 years Experience)



/ Field of Scope

- Industry
- High rise Residential
- Commercial
- Hospital
- Hotel and resort
- Government, Semi Government organization
- Autonomous organization
- National and Multinational NGO

/ Field of Service

- Landscaping
- Architectural
- Structural
- Design Review
- Construction Management
- MEP(Mechanical/Electrical/ Plumbing)
- Fire Protection and detection
- HVAC

/ Logistic Facilities

Equipment	No.	Brand and Country of Origin	Model
 Rebar Locator	02	HILTI- Germany	PS 35
	01	BOSCH- Germany	D-tect 150
 Ultrasonic Pulse Velocity Analyzer	02	Control-Italy	58-E4900
			58-E4800
 Rebound Hammer	01	Control-Italy	58 - CO 181/G
 Concrete Digital Hammer	01	Control-Italy	58-C0181/N
 Rebar/Ferro Scanner	01	HILTI- Germany	HILTI PS 250
	02	ZBL-China	630A
 Distance Meter	06	HILTI- Germany	HILTI PD 42
	02	BOSCH- Germany	BOSCH DLE 40
 Core Cutter Machine/ Diamond Coring Tool	02	HILTI- Germany	HILTI DD 120
 Hammer Drill	01	BOSCH- Germany	GSH 11VC
	01		GSH 11E

Visit our website to learn more
www.dzignscape.net



Our people are leading experts in their field. Our consultants are passionate about making a difference to our clients' results. We have built our expertise in projects big and small, technical and strategic, across the map for leading client organizations.

/ DIFE Enlistment Certificate

গণপ্রাতন্ত্রী বাংলাদেশ সরকার
কলকারখানা ও প্রতিষ্ঠান পরিদর্শন অধিদপ্তর
৪ রাজউক এভিনিউ, ঢাকা-১০০০।

কাঃ/টেকঃ/আরএমজি/২০১৪/২৫৭/মঃপরিঃ/

০৫৪/১৫

তারিখ: ১৪ জ্যৈষ্ঠ ১৪২২ বঙ্গাব্দ
০১ জুন ২০১৫ খ্রিস্টাব্দ।

বিষয় : Detailed Engineering Assessment সম্পাদনের জন্য ফর্ম তালিকাভুক্তিপ্রসঙ্গে।

উপর্যুক্ত বিষয়ের পরিপ্রেক্ষিতে জানানো যাচ্ছে যে, শ্রম ও কর্মসংস্থান মন্ত্রণালয়ের প্রজ্ঞাপন নং ৪০.০০.০০০০.০২২.১০.০০৯.১৩-০৪ তারিখ ০১.০১.২০১৫ অনুযায়ী “Task Force on Structural DEA” গঠিত হয়। উক্ত “Task Force on Structural DEA”-এ সভার সিদ্ধান্ত মোতাবেক Detailed Engineering Assessment সম্পাদনের জন্য আপনার ফর্মের নাম তালিকাভুক্ত করা হলো।

ব্যবস্থাপনা পরিচালক

ডি.জাইন স্কাপ কনসালটেন্ট লিমিটেড

হাউজ-১৯৩/এ, রোড-১, নিউ ডিওএইচএস

মহাখালী, ঢাকা।

মহাপরিদর্শক (অতিরিক্ত সচিব)
ফোন : ৯৫৫৫৫৫৪৬।
Email- ig@dife.gov.bd

বিতরণ :-

জ্ঞাতার্থেঃ

১। উপ মহাপরিদর্শক, কলকারখানা ও প্রতিষ্ঠান পরিদর্শন অধিদপ্তর, জেলা কার্যালয়, ঢাকা।

/ JICA Enlistment Certificate



Memo No: ০০৪-৪/৩০৭

Date: 11/11/14

To

Managing Director

d.zignscape Consultants LTD.

House # 193/A (Ground floor),

Road # 01New DOHS Mohakhali, Dhaka-1206

Sub: Enlistment of contractors under “RMG Sector Safe Working Environment Program” of JICA-Bangladesh Bank-CNCRP (Public Works Department) –BGMEA-BKMEA initiative.

Dear Sir

This is to inform you that your organization has been enlisted for Category B (Civil works) for retrofitting works of RMG factory buildings under “RMG Sector Safe Working Environment Program”. This enlistment has been approved by the focal committee of above mentioned program.

Sincerely yours

১১-১১-১৪

Md. Sohel Rahman

Executive Engineer, PWD Design Division-4, and

Team Leader, Working Team-3 of CNCRP Project

C.C. to

1. Md.Abdul Malek Sikder, Additional Chief Engineer (P&SP), Public Works Department & Project Director, CNCRP

2. Office Copy

Md. Sohel Rahman

Executive Engineer, PWD Design Division-4, and

Team Leader, Working Team-3 of CNCRP Project

/ Our Clients



Our corporate clients and their visual identification as company logos.



Ador Knit Composite Ltd.	Aftabunnesa Group	AJI Apparels Industry Ltd.	AKH Fashion Ltd.	Alpha Clothing Ltd.	AMC Sweater Ltd.	Amotex Ltd.
AMS International Sweater Ltd.	Ankhi Apparels Ltd.	APEX Group Ltd.	Arcorp Denim Ltd.	AZ Apparels Ltd.	Azim & Sons (Pvt.) Ltd.	Bangladesh Bank
Bangladesh Pou Hung International	Base Fashion	Basic clothing Ltd.	Centex Textiles & Apparels Ltd.	Civic Apparel Ltd.	Core Spoon Ltd.	Cortz-2 Apparels Ltd.
Crystel Impression Ltd.	D.K. Sweaters Ltd.	Dana Bottom Factory Ltd.	DBL Group	Debonair Ltd.	Dream Wear Garments	Dressman Group Ltd.
Ershad Knit	Ex Rayan Garments	Fortune Apparels	Glare Fashion Ltd.	Haidory Composite Knitwear Ltd.	Hasen Knit Composit Ltd.	HKD Internation (CEPZ) Ltd.
Interstoff Clothing Ltd.	J. R. Enterprise	Jay Jay Mills (Bangladesh) Private Ltd.	Joya Garments Ltd. (Sky Apparels Ltd)	Kazipur Fashion Ltd.	Knit Horizon	Kohinoor Garments Industries Ltd.
Mantrust Sweaters Ltd.	Mars Stich Ltd.	Max Sweater Ltd.	MG Knit Falir and MG Shirtex Ltd.	Mohammadi Fashion Sweaters Ltd.	Mohammadi Knit Star Ltd.	Mohammadi Nieche Flayer
N K Sweaters Ltd.	Noman Terry Towels Mills Ltd.	Noor Group	Orient Dresses Ltd.	Pawla Knitwar Pvt. Ltd.	Radiance Knitwears Ltd.	S.P.M. Designs Ltd.
Sailor Moon clothing Ltd.	Salman Adnan Ltd.	Shamsher Rezia Fashions Ltd.	Spring Trade Ltd.	Standard Stitches Ltd.	Taratex Ltd.	TCEL
Tivoli Apparel Ltd.	Utah Group	Wintex Garment Ltd.	Young Levels Ltd.	Zaber & Zubair Fabrics Ltd.	Zain Apparels	Zayan Tex Ltd.

/ Industrial Projects

“

Name of the Project	TM Textile & Garments Ltd.(unit-02)	Haseen Knit Composite Ltd.	Azim & Sons Ltd. (Unit-02)	Dressman Ltd.	Max Sweater Ltd.	Garments Park (BD) Ltd.	Kazipur Fashion Ltd.	Ershad Knit Fashion Ltd.	Centex Textile & Apparels Ltd.	Rayan Knit composite Ltd.	Utah Fashions Ltd.
Project Address	Kasor, Habirbari, Valuka, Mymensingh.	Mulaid, Maona, Shreepur,Gazipur.	Gacha Road, joydebpur, Gazipr-1704	BSCIC Industrial Area Tongi.	Tarabo, Rupgonj, Narayangonj.	Chittagong, Bangladesh.	Kolma, Savar, Bangladesh.	Sreepur, Kasimpur, Gazipur, Bangladesh.	Hemayetpur, Savar, Dhaka.	Chandra, Gazipur.	Shalna, Gazipur, Dhaka.
Project Type	Full Complaint Building Drawing Design and Supervision.	Full Complaint Building Drawing & Design.	Full Complaint Building Drawing Design and Supervision.	Full Complaint Building Drawing Design and Supervision.	Full Complaint Building Drawing Design and Supervision.	Full Complaint Building Drawing Design and Supervision.	Full Complaint Building Drawing Design and Supervision.	Full Complaint Building Drawing Design and Supervision.	Full Complaint Building Drawing Design and Supervision.	Full Complaint Building Drawing Design and Supervision.	Full Complaint Building Drawing Design and Supervision.
Name of the Client	TM Textile and Garments Ltd.	Haseen Kayeba Group.	Azim Sons Pvt.Ltd.	Dressman Group.	Max Sweater Ltd.	Garments Park (BD) Ltd.	Standard Group.	Ershad Knit Fashion Ltd.	Orient Group.	Noor Group.	UTAH Group.
Build Area	250000 sft (Apx)	22000 sft (Apx)	130000 Sft	140000 Sft	26000 Sft	240000 Sft	140000 Sft (Apx)	37000 Sft (Apx)	120000 Sft (Apx)	86000 Sft (Apx)	220000 Sft (Apx)
Type of Structure	Pre Fabricated Steel Structure.	Pre Fabricated Steel Structure.	RCC	RCC	Pre Fabricated Steel Structure.	RCC	RCC	Pre Fabricated Steel Structure.	RCC	RCC	RCC
Working Year	2017	April-2013	September-2015	March-2016 to till now	Sep-2016 to till now	Nov-2016 to till now	Feb-2016	March-2016 to November 2016	December-2016	December-2016	October -2016

/ Our sister concern



/ Tools we are using





STAY IN TOUCH

+880 28831756 | +880 1922114866 | +880 1922114861

info@dzignscape.net | dzignscape@dzignscape.net

Dhaka Office : House No. 193/A | Road No. 01, D.O.H.S | Mohakhali, Dhaka | Bangladesh
Chittagong Office : House No. 1146 | Roshid Building, 2nd Floor | Strand Road | Agrabad, Chittagong | Bangladesh

www.dzignscape.net